

# Voter



**LEAGUE OF WOMAN VOTERS  
GLENDALE/BURBANK**

**April 2010**

*The LEAGUE OF WOMEN VOTERS  
is where hands-on work to safeguard  
democracy leads to civic improvement.*

## Co-President's Message

Joan Hardie

**H**ealth care reform passes, and with yes votes from only one party. As a nurse and as a sister to several family members who have truly suffered at the hands of insurance companies, I'm so relieved that this reform legislation has passed. I'm confident too, that with time, those who disagreed with this legislation will see the benefits this first step toward health reform will bring. However, I'm concerned about the current state of partisan politics and the negativity it brings. The stories in the media about vandalism, death threats and lawsuits have such a new level of violence to them that I'm dumbfounded. We not only see this at the federal level, but very much at the state level as well. How can we make our lawmakers work together? What will it take?

On March 24 we had a successful Candidates' Forum. It was well attended with standing room only. We received many questions via our website as well as many audience questions. As it turns out, the League isn't the only one concerned about partisan politics. Several questions came in regarding how the potential candidates would avoid partisan politics and obstructionism. The Forum can be viewed on Burbank TV6, hopefully you all will be able to view the Forum. Remember to vote this April 13, 2010 in the Special Primary Election.

With a busy election season ahead of us, one that will have several candidate forums, I'm sure the League will continue to address this question until we see improvement in our legislators working together.

Our monthly member meeting met on the third Thursday of March. The meeting was a planning meeting where we discussed the upcoming elections and other possible activities. Only a small group of us showed, but the group did consist of board members and non-board members. For your information here is a list of possible activities we have planned for 2010 - 2011 & 2011 - 2012:

- Public forums on elected versus appointed treasurer
- Public forums on school parcel tax, if on the ballot
- New study on civics education
- Formation of campaign finance ethics committee
- Formation of Membership committee

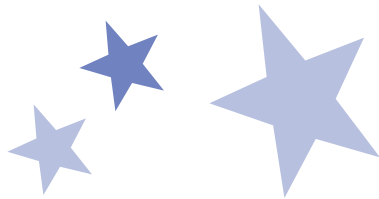
Please let Chris or me know if you would like to be a part of any of these activities. We welcome any and all involvement, so contact us by email or phone. **And remember to vote on April 13!**

## CALENDAR

**April 13  
Special Election  
Assembly District 43  
Don't forget to vote**

**April 24  
9:00am  
Pro/Con Speaker Training  
Hollenbeck Palms  
573 S Boyle Ave.  
Los Angeles, CA 90033**

**May 22  
9:30 am to 2 pm  
Annual Meeting  
Marie Callendar's  
707 N. Pacific Ave.  
Glendale CA 91203**



<http://www.lwvglendaleburbank.org>



LEAGUE OF  
WOMEN VOTERS  
GLENDALE/BURBANK  
Annual Meeting

**Speaker:**

Jason Wells

*City Editor, Glendale News Press*

**Topic:**

“The State of Local Papers”

**Date:** Saturday, May 22, 2010

**Time:** 10:00 am to 2:00 pm

**Place:** Marie Callendar's  
707 North Pacific Ave.,  
Glendale CA 91203  
(Banquet Room)

**Cost:** \$25.00

**Menu:**

Your choice of:  
Turkey Croissant Club  
Pot Roast Luncheon  
Marie's Vegetarian Quiche  
with salad or  
Grilled Lemon Chicken  
Make your selection at the table  
Pie for desert

**The reservation deadline is May 13, 2010**

Please reserve \_\_\_\_ places for me at the Annual Meeting.  
Enclosed is \$ \_\_\_\_\_.  
Mail check made out to LWVG/B to:  
Vera Naylor  
7714 Via Capri,  
Burbank CA 91504

Name(s): \_\_\_\_\_

\_\_\_\_\_

\_\_\_\_\_

Phone: \_\_\_\_\_



*Candidates' Forum: Candidates Mike Gatto, Chahe Keuroghelian, Nayiri Nahabedian and Sunder Ramani. From the back, Moderator Rita Zwern.*

## 43rd Assembly District Candidates' Forum

**O**n March 24, the Glendale/Burbank League presented a Candidates' Forum for the 43rd Assembly District. The Special Election, to fill the seat vacated by newly elected LA City Council Member Paul Krekorian, will take place on April 13, 2010.

All four candidates attended the Forum, which took place in the Burbank City Council Chambers and was broadcast live on Burbank TV6. The Forum will repeat often prior to the election. The Council Chambers were filled with people watching the Forum in person.

This forum had more public participation than any before. Our website was configured to accept questions prior to the Forum, and we received a record number of questions over the internet.

The forum was lively, as the candidates answered questions on a variety of issues, including the 2/3 majority required to pass a budget, redistricting, and illegal immigration. Although the responses were lively, the atmosphere was civil and respectful.

The League wishes to thank the members who participated in the forum, including co-chairs **Connie Wilson** and **Monica Marquez**, time keepers **Tom Carson** and **Dick Dommies**, question sorters **Gwen Cochran** and **Anna Rundle**, and greeters and question collectors **Florence Dommies**, **Mike Chapman** and **Mary Dickson**. **Susan Hallgren** handled the set up of the dais and **Rita Zwern** served as Moderator of the Forum.



*Dionisia Rodriguez and Monica Marquez register voters at the Burbank Farmer's Market.*

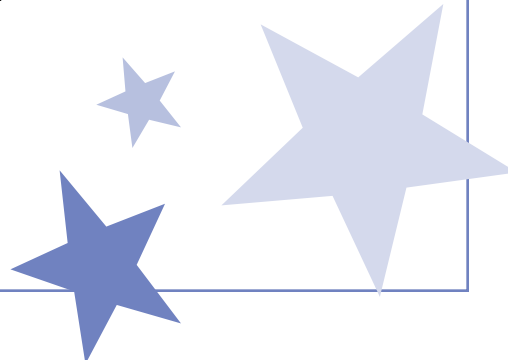
## Voter Registration

**A**mid the oranges, carrots, egg and decorative soap, the Glendale/Burbank League set up a Voter Registration table at the Burbank Farmer's Market on Saturday, March 20, 2010. We wanted to be sure that any voters who needed to register before the April 13 Special Election for California State Assembly District 43 had an opportunity to do so.

Every Saturday, rain or shine, the Farmer's Market takes over the parking lot of Burbank City Hall, and the crowds arrived early to shop for fresh fruits and vegetables. Many shoppers brought their own recycled bags and rolling carts to haul away their provisions.

We registered voters, and handed out registration forms to people who wanted to take them home. We handed out our SmartVoter bookmarks, which gives out the website for people to find nonpartisan information on line. ([www.smartvoter.org](http://www.smartvoter.org)).

Thanks to Co-President **Joan Hardie**, and Board Members **Dionisia Rodriguez**, **Mary Dickson** and **Monica Marquez** for staffing the table.



# Legislative Priorities 2010

Adopted by the LWVC Board of Directors on March 14, 2010

## PRIORITY ISSUES FOR ACTION IN THE LEGISLATURE

### State and Local Finances/ State Budget

- **SUPPORT** reform of the state budgeting process
- **SUPPORT** equitable and adequate generation and distribution of tax revenues

### Other Legislative Issues, As Time and Resources Permit

- **SUPPORT** requests from local Leagues and inter-League organizations (ILOs) for advocacy on bills of specific interest to their jurisdictions
- **TAKE ACTION** as appropriate on core issues: Redistricting, Elections, Voting Rights, Campaign Finance Reform, and Reproductive Choices
- **CONSIDER** Program Director recommendations for action on the highest priority bills in their program areas. We anticipate action in the areas of Health Care, Education, and the California Environmental Quality Act (CEQA).

### Statewide Ballot Measures

- **REVIEW** all statewide ballot measures and recommend a position or neutrality on each one to the LWVC Board of Directors

## LWVC Positions on the June 2010 Ballot Propositions

**P**roposition 13: Property Tax: New Construction Exclusion: Seismic Retrofitting. Although the LWVC generally supports regular, frequent reappraisals for property tax purposes, and this measure excludes certain construction from reappraisal, a case can be made for the public safety benefit of encouraging seismic retrofits. **NEUTRAL**

### PROPOSITION 14

Elections: Open Primaries (Top-Two Candidate Open Primary Act). The LWVC has never studied political parties, nor how they select their candidates, and has no position on this subject. **NO POSITION**

### PROPOSITION 15

Political Reform Act of 1974: California Fair Elections Act of 2008. The LWVC has long been a supporter of public financing and is co-chair of the campaign to pass Prop. 15.

**SUPPORT**

### PROPOSITION 16

New Two-Thirds Vote Requirement for Local Public Electricity Providers. LWVC positions call for a simple majority vote on revenue and finance measures at both the state and local levels. **OPPOSE**

### PROPOSITION 17

Allows Auto Insurance Companies to Base Their Prices in Part on a Driver's History of Insurance Coverage. The LWVC has not studied, and therefore has no position on, insurance issues. **NO POSITION**



## STATEMENT:

### **From Mary C. Wilson President of the League of Women Voters of the United States**

Washington, D.C.

“Today’s votes by the U.S. House of Representatives mark an historic milestone in American political history. The path that began with Social Security and continued with Medicare is reaching fruition with this health care legislation. Comprehensive health care reform will begin to undo decades of neglect and inaction that has left millions of Americans uninsured and at risk.

“This legislation is a monumental step in the fight for social justice.

“Too many citizens lack adequate health insurance coverage and rising costs threaten everyone. Passage of comprehensive health care legislation greatly expands coverage to include millions more Americans; protects the coverage that currently delivers care to most; reduces costs over the long term; and accomplishes these goals at a reasonable cost.

“It would be difficult to overstate the importance of today’s actions, and we commend our elected representatives for standing up for Americans and having the courage to do what needs to be done to confront the health care crisis in our country. The League congratulates the House leadership on a closely-fought victory.

“We can expect transformational reform from these bills. Access to health care will be extended to all Americans. Mechanisms to control rising costs will be put in place. And the marketplace will be expanded and safeguards put in place to protect consumers.

“Truly, this legislation is monumental, historic and transforming.

“Today we took the critical step in dealing with the current health care crisis. Tomorrow, many Americans will wake up to a new week and a new future that looks a great deal more promising.”

## Mary Wilson Sends Chief Justice Roberts a Message in Washington Post

*On Monday, March 15, The Washington Post ran Mary Wilson's hard-hitting letter to the editor, "Feedback," on Chief Justice Roberts's discomfort with criticism over the Citizens United decision. Her letter was a hit on our Facebook page and, across the blogosphere — Gavel Grab (Justice at Stake's blog) and Political Activity Law re-ran the letter, while Election Law Blog listed Mary's closing sentence, "Buck up, Mr. Chief Justice. Occasionally there are some things you really need to hear," as it's "Quote of the Day."*

### Full text of Mary's letter

Chief Justice John G. Roberts Jr. expressed doubt about having members of the Supreme Court attend the State of the Union address ["Obama vs. Supreme Court, Round 2," front page, March 11]. He was upset that President Obama directly criticized the court's 5 to 4 decision injecting corporate funding into candidate elections. Since the Supreme Court is the opaque and most isolated branch of government, perhaps the justices should recognize that a little honest feedback can be a good thing.

It is particularly important in this instance, since the decision in *Citizens United v. Federal Election Commission*

clearly revealed that the majority on the court has an astonishingly naive view of how corruption works in our nation's capital. Everyone else in the room understood that allowing huge sums of unregulated cash into our elections will undermine the role of individual voters and further expose our elected officials to the siren calls of corporate lobbyists.

Buck up, Mr. Chief Justice. Occasionally there are some things you really need to hear.

Mary G. Wilson, Washington

*The writer is president of the League of Women Voters of the United States, which submitted a friend-of-the-court brief in *Citizens United v. Federal Election Commission*.*

**"Buck up, Mr. Chief Justice. Occasionally there are some things you really need to hear"**

Mary Wilson

*President of the League of Women Voters of the United States*



LWV GLENDALE/BURBANK is pleased to announce notecards designed especially for us are now available.

Local artist Robin Palanker features five local women. All proceeds benefit LWV Glendale/Burbank



Set includes 10 cards, on 80 lb. paper two each of 5 figures LWVG/B logo on the back

\$13.00 per set, 2 sets for \$25.00 includes tax and handling

The supply is limited. To order, send the tearoff with your check.

PLEASE mail check payable to:

LEAGUE OF WOMEN VOTERS GLENDALE/BURBANK  
PO Box 21010, Glendale CA 91221-5110

Name: \_\_\_\_\_

Street: \_\_\_\_\_

City: \_\_\_\_\_ State: \_\_\_\_\_ Zip: \_\_\_\_\_

Phone: \_\_\_\_\_

Email: \_\_\_\_\_

Enclosed is a check for \$ \_\_\_\_\_ for \_\_\_\_\_ sets of notecards.



## Membership Application

It is easy to join the League of Women Voters of Glendale/Burbank. All Citizens of voting age are welcome. Associate Membership is open to all others.

YES! I want to add my voice to yours by joining the League of Women Voters as part of your voice for citizens and force for change. I enclose: (please check one or more of the following)

\$60.00 for a one-year individual membership (includes a copy of our VOTER, nine times per year)

\$100.00 for a one-year household membership for two members who share the same address (includes a copy of our VOTER nine times per year)

\$30.00 for a one-year student membership.

Names \_\_\_\_\_

Address \_\_\_\_\_

City, State, Zip \_\_\_\_\_

Telephone \_\_\_\_\_

I would like to receive my VOTER by email. My email address is \_\_\_\_\_

Make check payable to League of Women Voters. Mail to Vera Naylor, 7714 Via Capri, Burbank CA 91504

I am unable to join the League at this time, but enclose a contribution of \$ \_\_\_\_\_

**Gifts made payable to the "LWV Education Fund" are tax deductible.**

# Voter

The Voter is published nine times a year by the League of Women Voters of Glendale/Burbank, California

**Co-Presidents:** Chris Carson  
Joan Hardie  
**Editor:** Monica Marquez  
**Production:** Carole Dougherty  
**Circulation:** Anna Rundle

The League of Women Voters, a nonpartisan political organization, encourages informed and active participation in government, works to increase understanding of major public policy issues, and influences public policy through education advocacy.

The League never supports or opposes any political party or candidate. We advocate only on issues that members have studied and come to a consensus on. In an era of proliferating and powerful special interests, the League's advocacy in the public interest is increasingly recognized as an essential voice of democracy.



*What will your legacy be?*

As a leader in your community, you know what you want to accomplish for yourself, for your family, and for your community. Consider making the League of Women Voters\* part of your overall estate plan next time you speak with your attorney or financial professional, so that your hard work will carry on.

249 N. Brand Blvd.  
Glendale, CA 91203  
Corner of Brand/Calif.  
tel: 818.244.4448  
fax: 818.244.4795  
M-F 8:30-6, Sat. 10-4  
1125 E. Broadway  
Glendale, CA 91205  
Btwn Chevy Chase/Adams  
tel: 818.242.4270  
fax: 818.242.0525  
M-F 8:30-6:30  
Sat. 10-4, Sun. 12-4



**MAIL BOXES ETC.**  
A UPS® Company

**Laurel Pavone**  
Notary Public

MBE centers are independently owned and operated franchises.

**CATHY SELLITTO**  
**NOTARY PUBLIC**  
Mobile Service  
Business Hospitals Residence  
(818) 502-0661

## LEAGUE OF WOMAN VOTERS GLENDALE/BURBANK

Post Office Box 21010  
Glendale CA 91221-5110  
818 247-2407

League websites:  
LWV Glendale/Burbank  
<http://www.lwvglendaleburbank.org>

LWV California  
<http://www.ca.LWV.org>

LWV United States  
<http://www.LWV.org>

**Printed courtesy of MAIL BOXES ETC**